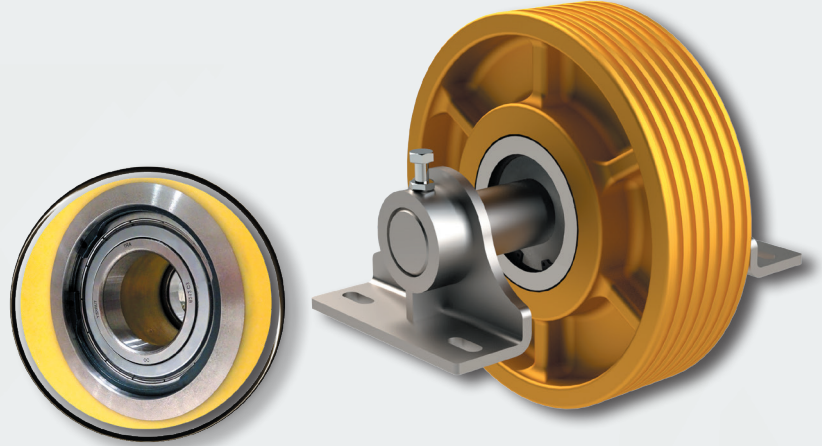




**YERLİ
ÜRETİM**
**DOMESTIC
PRODUCTION**

PLASTİK KASNAK DA GÜVENİ ARTTIRIYORUZ WE INCREASE THE CONFIDENCE IN PLASTIC SHEAVE

Sıcaklık farkından dolayı oluşan
rulman yatağı problemlerine son...
*Ends the bearing problems due
to temperature difference...*



GENEL ÖZELLİKLER / GENERAL FEATURES

- Hafifliği sayesinde kolay montaj
Easy assembly with its light weight
- Aşınmaya karşı daha fazla dirençli
More resistant to abrasion
- Minimum seviyede halat sesi ile kabinde konfor
Comfort in the car with minimal rope noise
- Homojen yapısı sayesinde minimum seviyede balans
Minimum level of balance thanks to its homogeneous structure
- Korozyona karşı dirençli
Corrosion resistant
- 1:1 - 1:2 Askı tiplerine uygun
Suitable for 1:1-1:2 rope types
- Döküme göre fiyat avantajı
Price advantage over casting
- İşlenmiş ve işlenmemiş olarak sipariş teslimi
Order delivery as machined or unmachined
- İhtiyaçlarınıza yönelik özel ölçüde üretim
Special production for your needs

ASPAMID⁺ FARKI / ASPAMID⁺ DIFFERENCE

- Plastik (Aspamid®) ve çeliğin birleşmesiyle güçlendirilmiş rulman yatağı
Reinforced bearing plate by the combination of plastic and steel
- Tonajlı asansörlerde kullanım imkanı
Opportunity of use in high-tonnage elevators
- Rulmanı birçok kez değiştirebilme imkanı
Possibility to replace the bearing many times
- Daha uzun kullanım ömrü
Longer life
- 4 rulman ile uniform yük dağılımı
With 4 bearings uniform load distribution



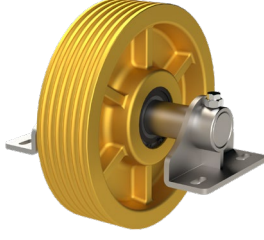
Kasnak Çapı Nominal Diameter (mm)	Kasnak Eni Sheaves Width (mm)	Maksimum Taşıma Kapasitesi Maximum Load (kg)	İşlenmemiş Kasnak Ağırlığı Unmachined Sheave Weight (kg)
Ø 210	108 - 124	1470 - 1680	4.40 - 4.70
Ø 240	70 - 80 - 90 - 104	1260 - 1300 - 1470	2.80 - 3.10 - 3.70 - 4.00
Ø 320	70 - 80 - 90 - 104 - 125 - 136	840 - 1050 - 1260 - 1300 - 1300 - 1300	4.80 - 5.30 - 5.60 - 6.50 - 8.40 - 9,05
Ø 360	78	1050	5.75
Ø 400	80 - 104	1050 - 1300	7.00 - 9.40

1187. Sok. No:8 Ostim/Ankara - Turkey T: 0312 354 17 31
aspar@aspar.com

ASPAMİD® PLASTİK KASNAKLARI

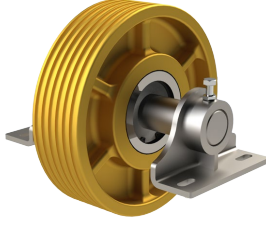
ASPAMİD® PLASTIC SHEAVES (PULLEYS)

KP SERİSİ
KP SERIES



ASPAMİD® SERİSİ | ASPAMİD® SERIES
Ø120mm - Ø560 mm Arası | Between

AP SERİSİ
AP SERIES

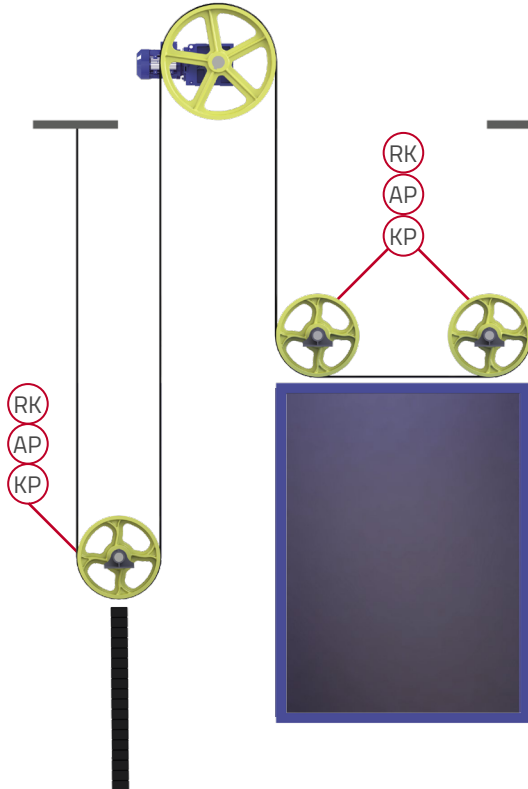
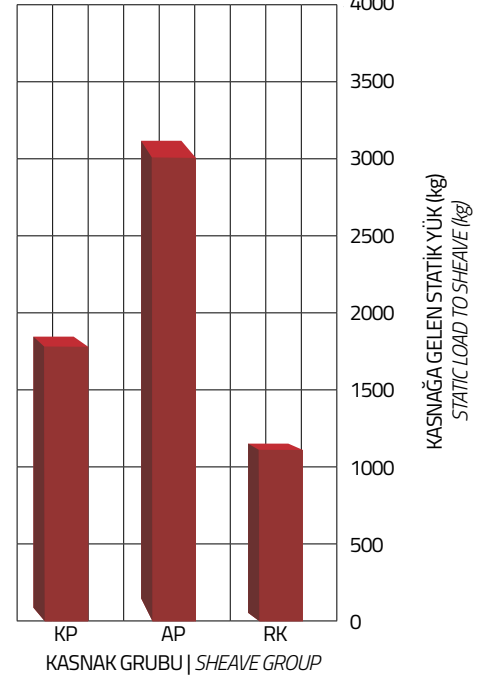


ASPAMİD® PLUS SERİSİ | ASPAMİD PLUS SERIES
Ø210mm - Ø400 mm Arası | Between

RK SERİSİ
RK SERIES

ASPAMİD® HOMELIFT SERİSİ |
ASPAMİD® HOMELIFT SERIES
Ø210mm - Ø400 mm Arası | Between

ASKI TİPİ | ROPING TYPE
1/2 - 1/4



- Malzemesi Polyamid PA 6 G'dir.
The material is Polyamid PA 6 G.

- Kasnağa gelen yük, aşağıdaki formülden kolayca hesaplanabilir.
($F=2 \times F_1 \times \sin(A/2)$) F1-halat yükü (kg), A-sarma açısı
The load on the pulley can be easily calculated from the following formula.
($F=2 \times F_1 \times \sin(A/2)$) F1-rope load (kg), A-winding angle

Mil hesaplamaları, asansörün tasarım ofisi tarafından yapılmalıdır, bu hesaplamalarda milin boyu mümkün olduğunca kısa olmasına dikkat edilmelidir.

- Axle calculations should be made by the design office of the elevator, in these calculations, the length of the axle should be as short as possible.

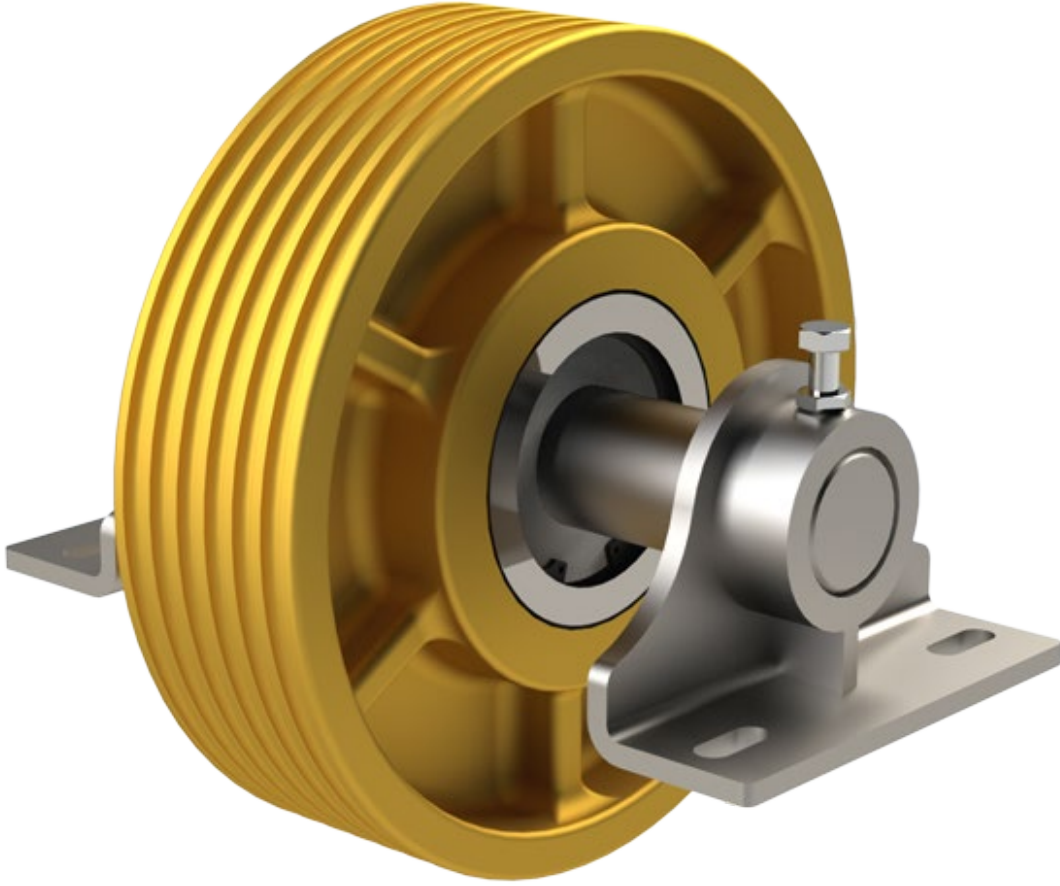
Hazır mil ölçülerimizi katalogumuzda bulabilirsiniz. Sabit ve kayar tip millerimiz mevcuttur. You can find our ready axle dimensions in our catalogue. We have fixed and sliding type axles.

- Rulmanlarımız yaklaşık 10.000 saat çalışma ömrüne göre hesap edilmiştir. Daha fazla çalışma saati istenirse, bu ayrıca belirtilmelidir.
Our bearings are calculated according to the working life of approximately 10,000 hours. If further working hours are requested, this must be specified separately.

- Montaj esnasında halatların sarım yönlerine (sağ sarım - sol sarım) eşit sayıda olması kasnakların ömrü ve halat sesinin azaltılması açısından önemlidir.
During the assembly, the ropes should be equal to the winding directions (right winding - left winding) and this is important for the life of the pulleys and the reduction of the rope noise.

Kasnaklarımızda balans mevcuttur. 1.6 m/s ve üstü kabin hızlarında balans yapılması önemlidir.

Balance is available in our pulleys. Balancing at car speeds of 1.6 m / s and above is important.



AP SERİSİ
AP SERIES

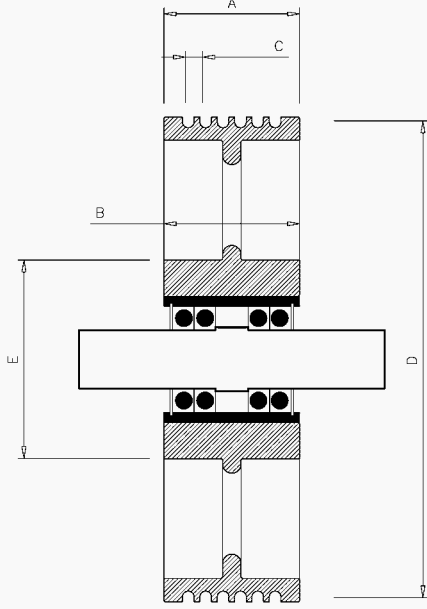
ASPAMİD® PLUS PLASTİK KASNAKLARI
ASPAMİD® PLUS PLASTIC SHEAVES (PULLEYS)

AP SERİSİ - ASPAMİD® PLUS PLASTİK KASNAKLARI

AP SERIES - ASPAMID® PLUS PLASTIC SHEAVES (PULLEYS)

1:1 - 1:2 ASKI
1:1 - 1:2 ROPING

SABİT MİL
FIXED AXLE



Ø210 mm

MİL BOYU | AXLE LENGTH

300 mm

KASNAK ÇAP NOMİNAL DIAMETER	KANAL SAYISI NUMBER OF GROOVES	HALAT ÇAP ROPE DIAMETER	HALAT MERKEZİ DISTANCE BETWEEN ROPES	GENİŞLİK CROWN WIDTH	GÖBEK GENİŞLİK HUB WIDTH	GÖBEK DIŞI ÇAP HUB OUTSIDE DIAMETER	RULMAN BALL BEARING	MİL ÇAP AXLE DIAMETER	STATİK YÜK STATIC LOAD	ÜRÜN KODU PRODUCT CODE	AĞIRLIK WEIGHT (INCLUDE PILLOW BLOCKS)
D		C	A	B	E						
Ø mm		Ø mm	mm	mm	mm	Ø mm		Ø mm	KG		KG
210	6	6,5	11	106	106	130	4x6210ZZ	50	1260	AP216-6,5	20
210	7	6,5	11	106	106	130	4x6210ZZ	50	1470	AP217-6,5	20
210	8	6,5	11	106	106	130	4x6210ZZ	50	1680	AP218-6,5	20
210	6	8	13	106	106	130	4x6210ZZ	50	1260	AP216-8	20
210	7	8	13	106	106	130	4x6210ZZ	50	1470	AP217-8	20
210	8	8	13	126	126	130	4x6210ZZ	50	1680	AP218-8	21

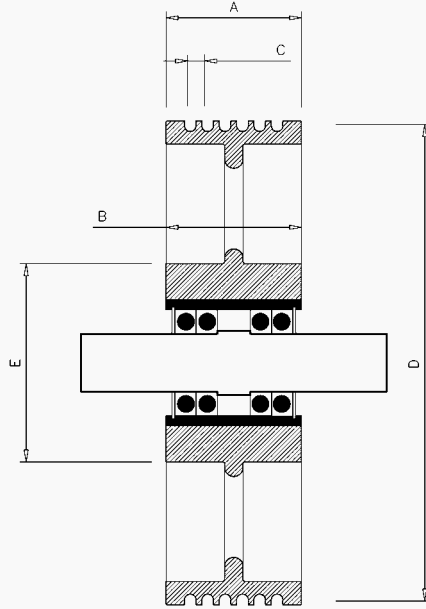
AP SERİSİ - ASPAMİD® PLUS PLASTİK KASNAKLARI

AP SERIES - ASPAMID® PLUS PLASTIC SHEAVES (PULLEYS)

1:1 - 1:2 ASKI
1:1 - 1:2 ROPING

SABİT MİL
FIXED AXLE

AP SERİSİ
AP SERIES



Ø240 mm

MİL BOYU | AXLE LENGTH

300 mm

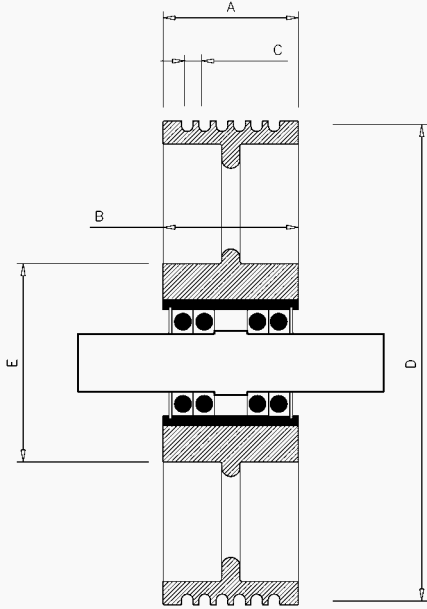
KASNAK ÇAP NOMINAL DIAMETER	KANAL SAYISI NUMBER OF GROOVES	HALAT ÇAP ROPE DIAMETER	HALAT MERKEZİ DISTANCE BETWEEN ROPES	GENİŞLİK CROWN WIDTH	GÖBEK GENİŞLİK HUB WIDTH	GÖBEK DIŞ ÇAP HUB OUTSIDE DIAMETER	RULMAN BALL BEARING	MİL ÇAP AXLE DIAMETER	STATİK YÜK STATIC LOAD	ÜRÜN KODU PRODUCT CODE	AĞIRLIK WEIGHT (INCLUDE PILLOW BLOCKS)
D		Ø mm	C	A	B	E		Ø mm	KG		KG
Ø mm		Ø mm	mm	mm	mm	Ø mm		Ø mm	KG		KG
240	6	6,5	11	104	104	130	4x6210ZZ	50	1260	AP246-6,5	22
240	7	6,5	11	104	104	130	4x6210ZZ	50	1300	AP247-6,5	22
240	6	8	13	104	104	130	4x6210ZZ	50	1300	AP246-8	22
240	7	8	13	104	104	130	4x6210ZZ	50	1300	AP247-8	22

AP SERİSİ - ASPAMİD® PLUS PLASTİK KASNAKLARI

AP SERIES - ASPAMİD® PLUS PLASTIC SHEAVES (PULLEYS)

1:1 - 1:2 ASKI
1:1 - 1:2 ROPING

SABİT MİL
FIXED AXLE



Ø320 mm

MİL BOYU | AXLE LENGTH

300 mm

KASNAK ÇAPI NOMINAL DIAMETER	KANAL SAYISI NUMBER OF GROOVES	HALAT ÇAPI ROPE DIAMETER	HALAT MERKEZİ DISTANCE BETWEEN ROPES	GENİŞLİK CROWN WIDTH	GÖBEK GENİŞLİK HUB WIDTH	GÖBEK DİŞ ÇAP HUB OUTSIDE DIAMETER	RULMAN BALL BEARING	MİL ÇAPI AXLE DIAMETER	STATİK YÜK STATIC LOAD	ÜRÜN KODU PRODUCT CODE	AĞIRLIK WEIGHT (INCLUDE PILLOW BLOCKS)
D		Ø mm	C	A	B	E		Ø mm	KG		KG
320	6	6,5	11	104	104	130	2x6210ZZ	50	1260	AP326-6,5	22
320	7	6,5	11	104	104	130	2x6210ZZ	50	1300	AP327-6,5	22
320	8	6,5	11	104	104	130	2x6210ZZ	50	1300	AP328-6,5	23
320	9	6,5	11	110	110	130	2x6210ZZ	50	1300	AP329-6,5	23
320	10	6,5	11	124	124	130	2x6210ZZ	50	1300	AP3210-6,5	23
320	6	8	13	104	104	130	2x6210ZZ	50	1300	AP326-8	22
320	7	8	13	110	104	130	2x6210ZZ	50	1300	AP327-8	22
320	8	8	13	115	104	130	2x6210ZZ	50	1300	AP328-8	23
320	9	8	13	132	104	130	2x6210ZZ	50	1300	AP329-8	25
320	6	10	17	124	124	130	2x6210ZZ	50	1300	AP326-10	23
320	7	10	17	132	132	130	2x6210ZZ	50	1300	AP327-10	25

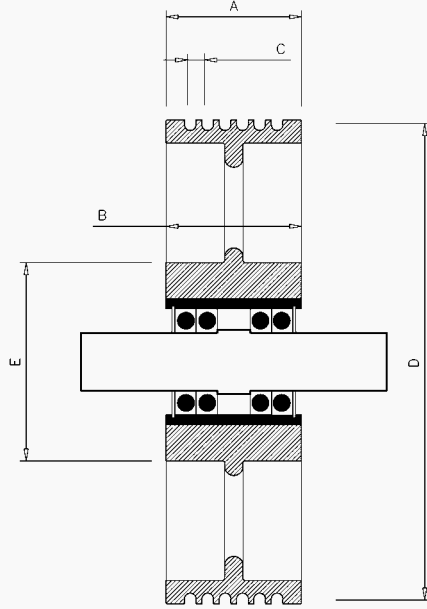
AP SERİSİ - ASPAMİD® PLUS PLASTİK KASNAKLARI

AP SERIES - ASPAMID® PLUS PLASTIC SHEAVES (PULLEYS)

1:1 - 1:2 ASKI
1:1 - 1:2 ROPING

SABİT MİL
FIXED AXLE

AP SERİSİ
AP SERIES



Ø360 mm

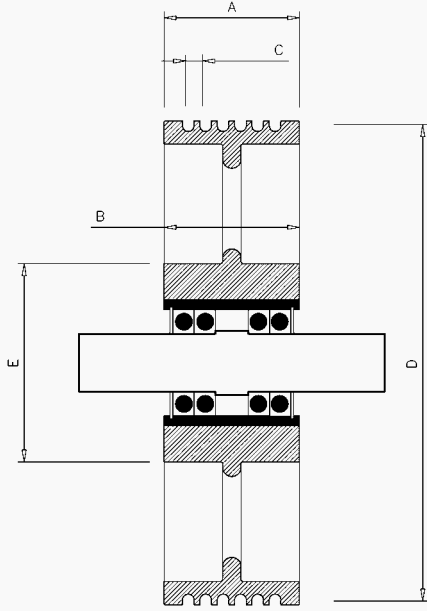
MİL BOYU | AXLE LENGTH 300 mm

KASNAK ÇAP NOMINAL DIAMETER	KANAL SAYISI NUMBER OF GROOVES	HALAT ÇAP ROPE DIAMETER	HALAT MERKEZİ DISTANCE BETWEEN ROPES	GENİŞLİK CROWN WIDTH	GÖBEK GENİŞLİK HUB WIDTH	GÖBEK DIŞ ÇAP HUB OUTSIDE DIAMETER	RULMAN BALL BEARING	MİL ÇAP AXLE DIAMETER	STATİK YÜK STATIC LOAD	ÜRÜN KODU PRODUCT CODE	AĞIRLIK WEIGHT (INCLUDE PILLOW BLOCKS)
D			C	A	B	E					
Ø mm		Ø mm	mm	mm	mm	Ø mm		Ø mm	KG		KG
360	7	6,5	11	104	104	150	2x6210ZZ	50	1260	AP367-6,5	22
360	8	6,5	11	104	104	150	2x6210ZZ	50	1300	AP368-6,5	23
360	9	6,5	11	110	110	150	2x6210ZZ	50	1300	AP369-6,5	23
360	10	6,5	11	124	124	150	2x6210ZZ	50	1300	AP3610-6,5	23
360	11	6,5	11	140	124	150	2x6210ZZ	50	1300	AP3611-6,5	25
360	6	8	13	104	104	150	2x6210ZZ	50	1300	AP366-8	22
360	7	8	13	110	110	150	2x6210ZZ	50	1300	AP367-8	22
360	8	8	13	115	115	150	2x6210ZZ	50	1300	AP368-8	23
360	9	8	13	132	132	150	2x6210ZZ	50	1300	AP369-8	25
360	6	10	17	124	124	150	2x6210ZZ	50	1300	AP366-10	23
360	7	10	17	132	132	150	2x6210ZZ	50	1300	AP367-10	25

AP SERİSİ - ASPAMİD® PLUS PLASTİK KASNAKLARI
AP SERIES - ASPAMİD® PLUS PLASTIC SHEAVES (PULLEYS)

1:1 - 1:2 ASKI
1:1 - 1:2 ROPING

SABİT MİL
FIXED AXLE



Ø400 mm

MİL BOYU | AXLE LENGTH

300 mm

KASNAK ÇAPI NOMİNAL DIAMETER	KANAL SAYISI NUMBER OF GROOVES	HALAT ÇAPI ROPE DIAME- TER	HALAT MERKEZİ DISTANCE BETWEEN ROPES	GENİŞLİK CROWN WIDTH	GÖBEK GENİŞLİK HUB WIDTH	GÖBEK DIŞ ÇAP HUB OUTSIDE DIAMETER	RULMAN BALL BEARING	MİL ÇAPI AXLE DIAMETER	STATİK YÜK STATIC LOAD	ÜRÜN KODU PRODUCT CODE	AĞIRLIK WEIGHT (INCLUDE PILLOW BLOCKS)
D			C	A	B	E					
Ø mm		Ø mm	mm	mm	mm	Ø mm		Ø mm	KG		KG
400	6	6,5	11	104	104	155	4x6210ZZ	50	1260	AP406-6,5	29
400	7	6,5	11	104	104	155	4x6210ZZ	50	1300	AP407-6,5	29
400	6	8	13	104	104	155	4x6210ZZ	50	1300	AP406-8	29