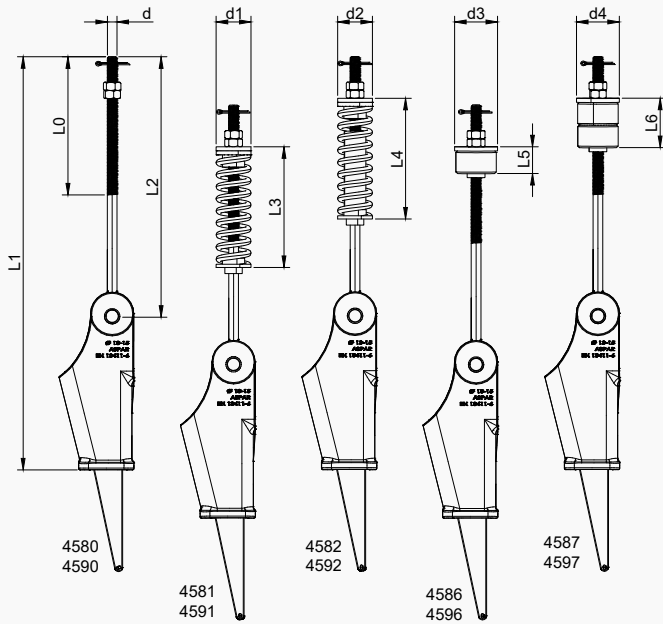
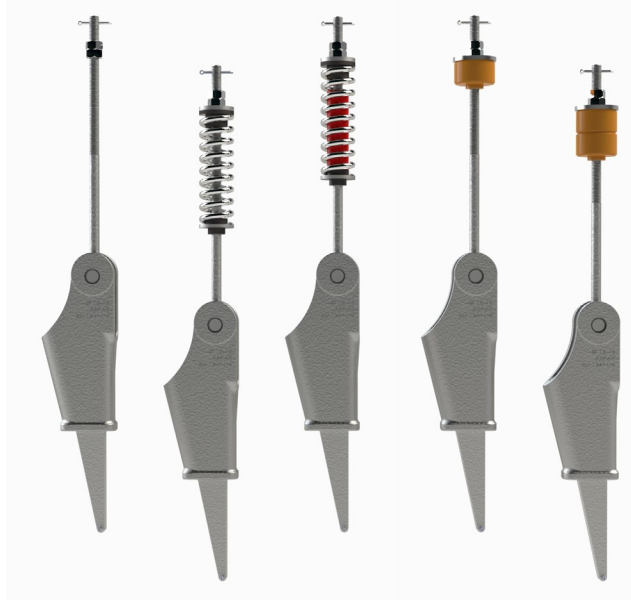


Ø 13-15 mm

**DÖKÜM GÖVDELİ HALAT ŞİŞESİ | ASYMMETRIC WEDGE (DUCTILE IRON) ROPE ATTACHMENT**

EN13411-6



TÜM METAL YÜZEYLER GALVANİZ KAPLANMIŞTIR  
ALL SURFACE ARE GALVANIZED

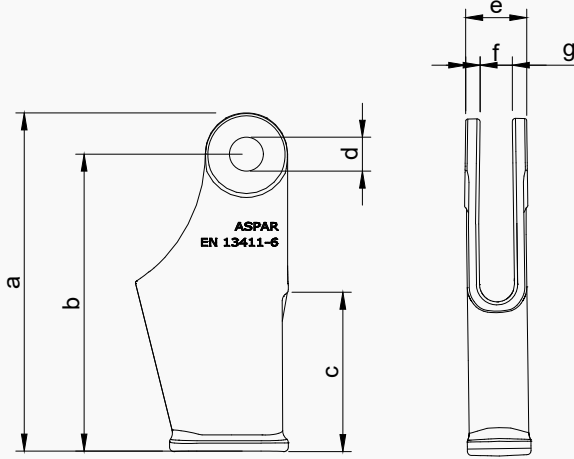
TÜM HALAT ŞİŞELERİ HALAT KOPMA YÜKÜ (124.80 KN)  
TESTLERİNDEN BAŞARI İLE GEÇMİŞTİR  
ALL THE ROPE ATTACHMENTS PASSED THE ROPE BREAKING  
FORCE (124.80 KN) TESTS SUCCESSFULLY.

KOD/CODE	L0	L1	L2	L3	L4	L5	L6	d	d1	d2	d3	d4
4580	170	634	450					M24				
4581	170	634	450	200				M24	65			
4582	170	634	450		200			M24		65		
4586	170	634	450			33		M24			83	
4587	170	634	450				61	M24				83
4590	470	934	750					M24				
4591	470	934	750	200				M24	65			
4592	470	934	750		200			M24		65		
4596	470	934	750			33		M24			83	
4597	470	934	750				61	M24				83

## DÖKÜM GÖVDELİ HALAT ŞİŞESİ | ASYMMETRIC WEDGE (DUCTILE IRON) ROPE ATTACHMENT

EN13411-6

Ø 13-15 mm  
GÖVDE | BODY

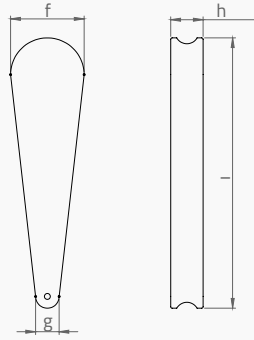


MALZEME | MATERIAL  
SFERO DÖKÜM | DUCTILE IRON  
EN-GJS-400-18LT

a	b	c	d	e	f	g
220	190	115	20	40	20	10

EN13411-6

Ø 13-15 mm  
KAMA | WEDGE

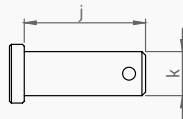


MALZEME | MATERIAL  
PİK DÖKÜM | CAST IRON  
EN-GJM-400-5  
EN-GJL-200

f	g	h	i
43	10	16	184

EN13411-6

Ø 13-15 mm  
PİM | PIN



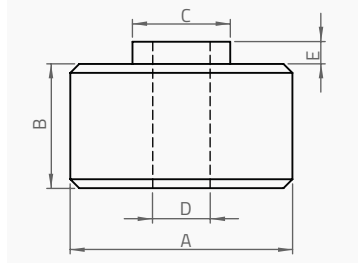
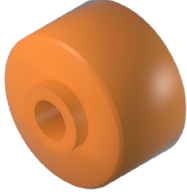
MALZEME | MATERIAL  
METAL | ROUND METAL  
BAR  
10083 - 1 C 35 E

j	k
50	Ø19

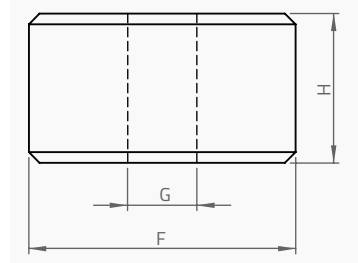
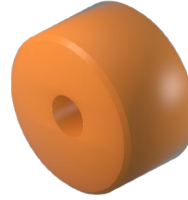
## DÖKÜM GÖVDELİ HALAT ŞİŞESİ | ASYMMETRIC WEDGE (DUCTILE IRON) ROPE ATTACHMENT

Ø 13-15 mm

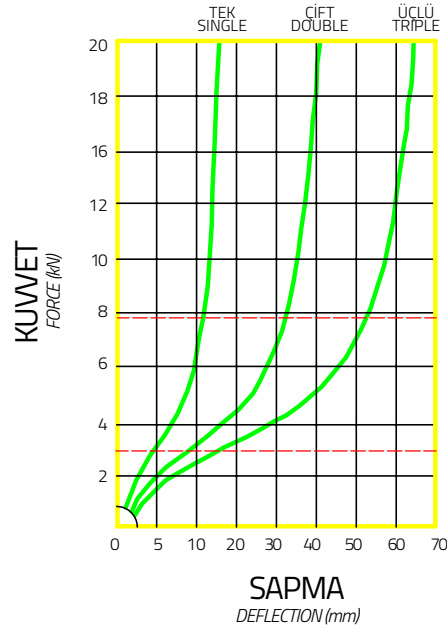
### POLIÜRETAN LASTİK | POLYURETHANE CABLE BUFFER



TİP   TYPE	A	B	C	D	E
L5 - L6	80	28	27	25	5

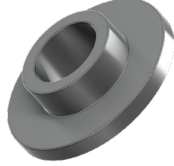


TİP   TYPE	F	G	H
L6	80	25	28

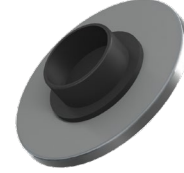


DÖKÜM GÖVDELİ HALAT ŞİŞESİ | *ASYMMETRIC WEDGE (DUCTILE IRON) ROPE ATTACHMENT*

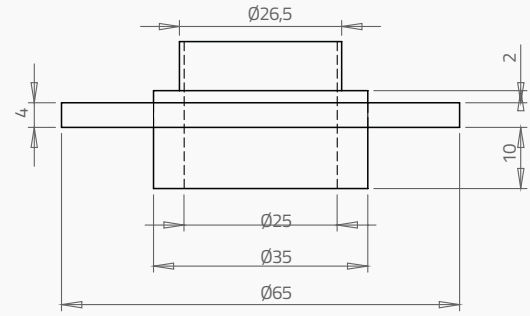
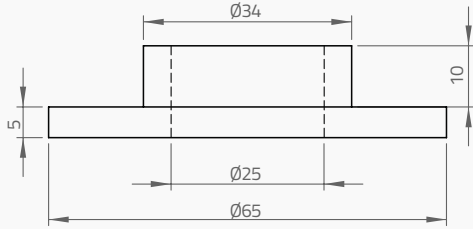
Ø 13-15 MM  
4581 | 4582 | 4591 | 4592



METAL  
SHEET IRON



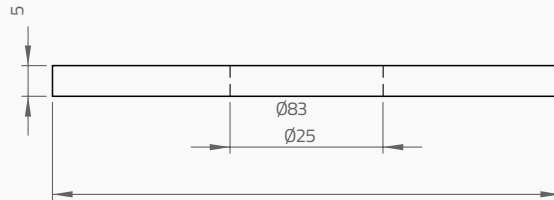
KAUÇUK  
RUBBER



Ø 13-15 mm  
4586 | 4587 | 4596 | 4597

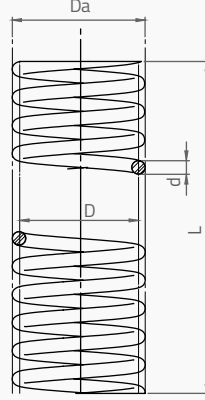
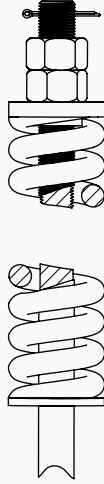


METAL  
SHEET IRON



## DÖKÜM GÖVDELİ HALAT ŞİŞESİ | ASYMMETRIC WEDGE (DUCTILE IRON) ROPE ATTACHMENT

Ø 13-15 mm  
YAY | SPRING

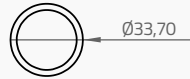
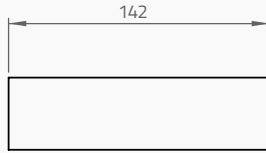


MALZEME | MATERIAL  
DIN 17223 B - EN 10270B

HALAT ŞİŞELERİ  
ROPE ATTACHMENTS

DİŞ ÇAP OUTER DIAMETER	MERKEZ ÇAPI MID THREAD DIAMETER	TEL ÇAPI DIAMETER SPRING WIRE	BOY UNSTRESSED LENGHT	KUVVET ELESTIC FORCE	STROK RANGE OF SPRING	YAY SABİTİ SPRING RATE CONSTANT
MM	MM	MM	MM	N	MM	N/MM
DA	D	D	L	F	L1	K
65	50	15	190	11963	25	486,78

Ø 13-15 mm  
YAY BORUSU | SPRING STOPPER



MALZEME | MATERIAL  
METAL | METAL

### KOLİ BİLGİLERİ | PACKING MEASURE

ÜRÜN ADI PRODUCT DESCRIPTION	KOLİDEKİ ADET QUANTITY IN PACKAGE (PCS)	EN WIDTH (CM)	BOY LENGTH (CM)	YÜKSEKLİK HEIGHT (CM)	AĞIRLIK WEIGHT (KG)
Ø15-17 HALAT ŞİŞESİ Ø15-17 ROPE ATTACHMENT	4	32	77	14	32,80