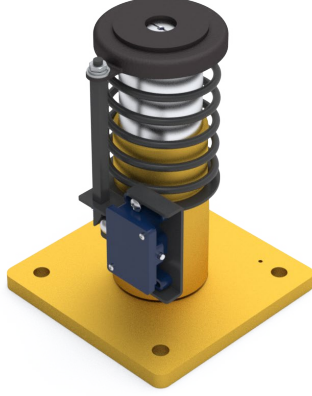


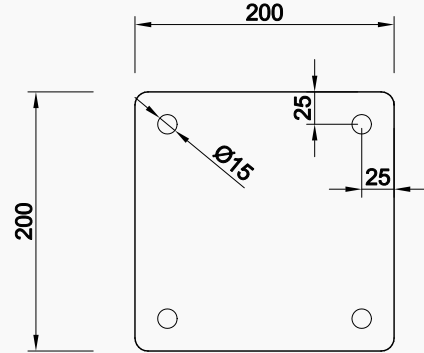
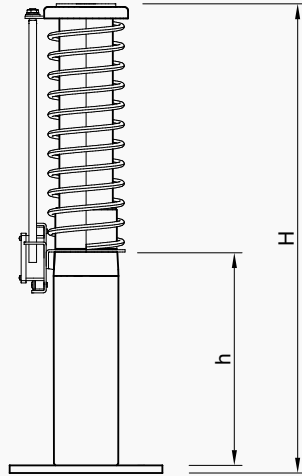
AKHT01

HİDROLİK TAMPON | HYDRAULIC BUFFER

DIN EN81-20/-50
2014/33/EU



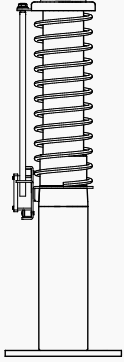
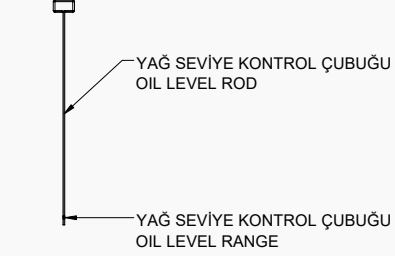
- CE Belgeli
CE Certificated
- Kabin optimum yavaşlatma özelliği
The optimum slowdown car feature
- Ses ve darbeyi azaltması için lastik yalıtım
Rubber isolation for increasing the voice and bump
- Mekanik olarak elektriği kesen emniyet siviçi
Mechanical safety switch
- Yağ kontrol çubuğu
Oil control bar
- Kabin ve Ağırlıkta kullanım
Hydraulic lift buffer for car and counterweight



ÜRÜN KODU CODE	TİP TYPE	ÖLÇÜLER DIMENSION (mm)	
		H (mm)	h (mm)
1003	AKHT01	271	78

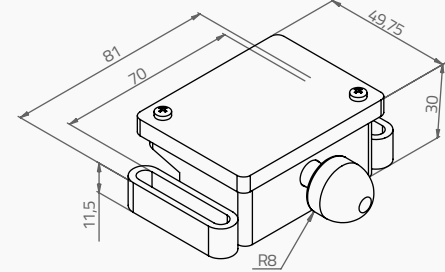
TİP ADI TYPE NAME	AKHT01
NOMİNAL HIZ NOMINAL SPEED (m/s)	1.00
MAKSİMUM HIZ MAXIMUM SPEED	1.15
MAKSİMUM YÜKLEME MAXIMUM LOAD (kg)	2800
MINİMUM YÜKLEME MINIMUM LOAD (kg)	1300
STROK STROKE (mm)	78

YAĞ SEVİYESİ KONTROLÜ OIL LEVEL CONTROL



*Yağ Seviyesi En Az Göstergenin Orta Seviyesinde Olmalıdır
*The oil level should be at least the mid-level indicator

siviç | SWITCH



OPSİYONEL OLARAK IP67 SIVIÇ KULLANIMI
OPTIONAL USAGE OF IP67 SWITCH

Ürün Kodu Product Code	25004
Mekanik Ömür Mechanical Durability	5.000.000 Açma-Kapama On-Off
Çalışma Sıcaklığı Operating Temperature	-5 / +60 °C
Koruma Sınıfı Protection Degree	IP2X – IPX4
Çalışma Gerilimi (Ue) Rated Operating Voltage	24V 10A - 220V 6A
Çalışma Akımı (Ie) Operating Current	15 A
Yalıtım Gerilimi (Ui) Rated Insulation Voltage	660V
Çalışma Frekansı (f) Operating Frequency	50 - 60 Hz
Kullanım Sınıfı Usage Class	AC15
Isınma Akımı Heat Current	10 A
Standart Standards	EN 60947-5-1, IEC 60947-1, EN60529, EN60695-2-11

KOLİ BİLGİLERİ | PACKING INFORMATION

TİP ADI TYPE NAME	AKHT01
KOLİ EBATLARI (mm) En x Boy x Yükseklik PACKAGE DIMENSIONS (mm) Width x Length x Height	280 x 200 x 200
KOLİ AĞIRLIĞI Package Weight (kg)	6.00 kg