



ASPAR ASANSÖR AKSAMLARI A.Ş.
MECHANICAL LIFT COMPONENTS AND FOUNDRY

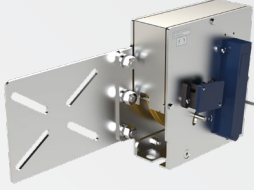
- ISO 9001:2015
- ISO 14001:2015
- ISO 45001:2018

more than
50
years

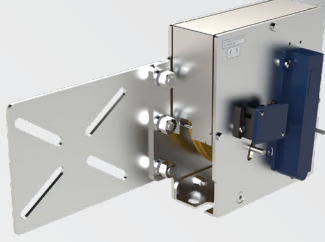
OVERSPEED GOVERNORS REGÜLATÖRLER



OSG M



OSG C



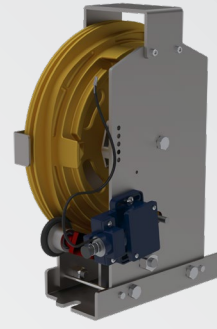
OSG A



OSG B



OSG HS

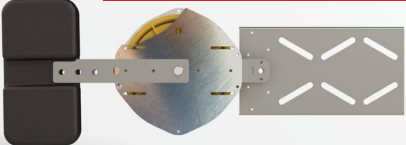


TYPE NAME TİP ADI	SHEAVE DIAMETER KASNAK ÇAPI Ø mm	NOMINAL SPEED NOMİNAL HIZ m/s	ROPE DIAMETER HALAT ÇAPI Ø mm
OSG M	Ø120	0,20 - 1,20	Ø6 - 6,5
OSG C	Ø200	0,40 - 1,60	Ø6 - 6,5
OSG A	Ø235	0,30 - 1,60	Ø6 - 6,5
OSG B	Ø315	0,63 - 2,00	Ø6 - 6,5 - 8
OSG HS	Ø300	2.00 - 3.00	Ø6 - 6,5 - 8

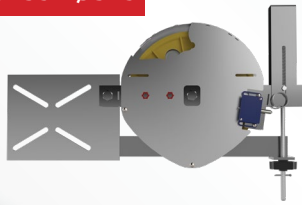
TENSIONER GERGİ KASNAĞI

SHEAVE DIAMETER KASNAK ÇAPI Ø MM	CONNECTABILITY TO THE GUIDE RAIL RAYA BAĞLANABİLİRLİK	CONNECTABILITY TO THE BASE TABANA BAĞLANABİLİRLİK	PLASTIC SHEAVE PLASTİK KASNAK	IRON SHEAVE DÖKÜM KASNAK	WEIGHTLESS USE AĞIRLIKSIZ KULLANIM	CONNECTABILITY TO THE 25 KG WEIGHT 25 KG AĞIRLIK İLE KULLANABİLİRLİK
Ø120	●	●	●	●	●	
Ø200	●	●	●	●	●	
Ø235	●		●	●	●	●
Ø300	●		●	●	●	●
Ø315	●		●	●	●	●

Ø200 - Ø235 - Ø300 - Ø315



Ø235 - Ø315



Ø200

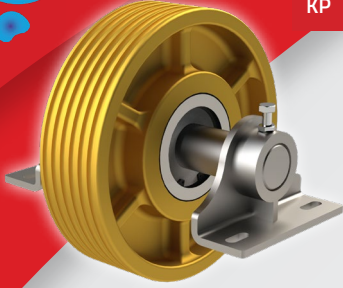


Ø120

2400 Çeşit
Saptırma ve Tahrik Kasnağı
2400 Kinds of Diverting
& Traction Sheaves

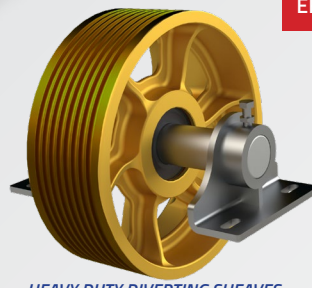


SHEAVES (PULLEYS) KASNAKLAR



KP

PLASTIC SHEAVES (ASPAMID®)
PLASTİK KASNAKLARI



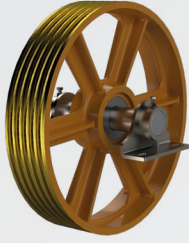
EK

HEAVY DUTY DIVERTING SHEAVES
(ECONOMIC LIGHT LOAD)
PALANGA KASNAKLARI
(EKONOMİK HAFİF YÜK)



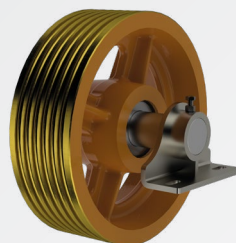
SL

DIVERTING SHEAVES
SAPTIRMA KASNAKLARI



PL

HEAVY DUTY DIVERTING SHEAVES
(LIGHT LOAD)
PALANGA KASNAKLARI
(HAFİF YÜK)



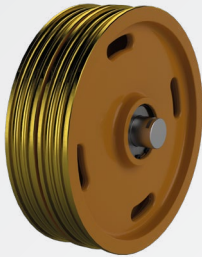
PK

HEAVY DUTY DIVERTING SHEAVES
PALANGA KASNAKLARI



PYK

HEAVY DUTY DIVERTING SHEAVES
(REINFORCED)
PALANGA AĞIR YÜK KASNAKLARI



HK

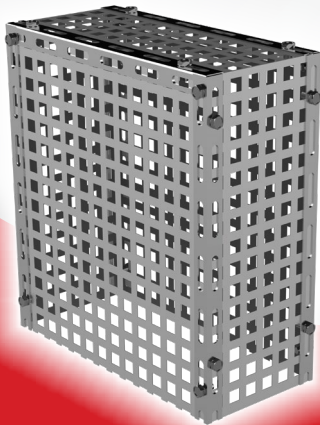
HYDRAULIC LIFT'S SHEAVES
HİDROLİK KASNAKLARI



TK

TRACTION SHEAVES
TAHRİK KASNAKLARI

SHEAVE SERIES KASNAK SERİSİ	ROPING TYPE ASKI TİPİ	MAX LOAD KASNAĞA GELECEK MAKSİMUM YÜK kg	IRON SHEAVE DÖKÜM GÖVDE	PLASTIC SHEAVE PLASTİK GÖVDE
KP	1:1 - 1:2	2500		●
EK	1:1 - 1:2	3000	●	
SL	1:1	2000	●	
PL	1:1 - 1:2	3750	●	
PK	1:1 - 1:2	5000	●	
PYK	1:1 - 1:2 1:3 - 1:4	9500	●	
HK	HYDRAULIC LIFT'S SHEAVES HİDROLİK ASANSÖR KASNAKLARI			
TK	TRACTION PULLEY OF VARIOUS BRANDS MUHTELİF MARKALARIN MAKİNA KASNAKLARI			

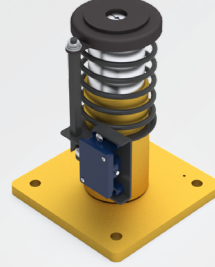


PROTECTION COVERS KORUMA SAÇLARI



BUFFERS TAMPONLAR

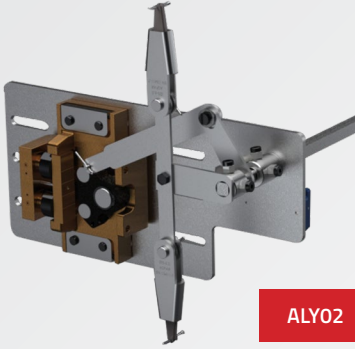
BUFFER ELEVATION PLATFORM
TAMPON YÜKSELTME SEHPASI



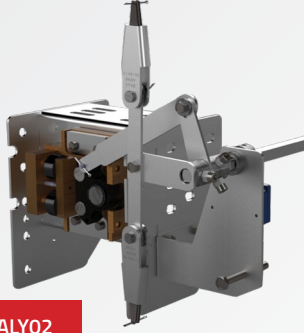
TYPE NAME TİP ADI	MAX NOMINAL SPEED MAX NOMİNAL HIZ	MAX LOAD MAX KAPASİTE (P+Q)	HEIGHT YÜKSEKLİK	STROKE STROK
	m/s	kg	mm	mm
AKHT16	1.60	2050	635	195
AKHT20	2.00	2050	800	295
AKHT01	1.00	2800	271	78

SZUTEST
CERTIFICATED BY SZUTEST

SAFETY GEARS FRENLER



ALY02

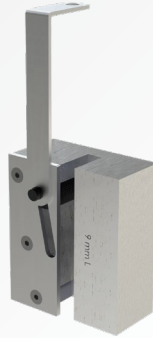


ALY02

ALY05



ALY06



TYPE NAME TİP ADI	NOMINAL SPEED RANGE NOMİNAL HIZ ARALIĞI m/s	MAX TRIPPING SPEED MAX FRENLEME HIZI m/s	RAIL RAY GUIDE mm	MINIMUM LOAD MIN TAŞIMA KAPASİTESİ KAPASİTE kg (P+Q)	MAXIMUM LOAD RANGE MAX TAŞIMA KAPASİTESİ KAPASİTESİ ARALIĞI kg (P+Q)
ALY02	0,63 - 2,00	2,15	9-10 16	600	1450 2870
ALY05	0,20 - 0,63	1,00	16	1600	13658 15539
ALY06	0,20 - 0,63	1,00	9-16	450	3450 4441

COLD DRAWN & MACHINED
SOĞUK ÇEKME VE İŞLENMİŞ

ALY02 PROGRESSIVE SAFETY GEAR
ALY02 KAYDIRMALI FREN BLOĞU

ALY05-ALY06 INSTANTANEOUS SAFETY GEAR
ALY05-ALY06 ANI TİP FREN BLOĞU

LIFT Certificate TU-Sofia
Conformity assessment of lift and safety components for lifts

GUIDE SHOES PATENLER

MAX
2,00 m/s



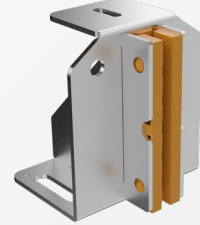
5-9-10-16 mm
SHOCK ABSORBER GUIDE SHOES
AMORTİSÖRLÜ PATEN

MAX
2,00 m/s



5-9-10-16 mm
SHOCK ABSORBER GUIDE SHOES FOR HEAVY DUTY
AMORTİSÖRLÜ YÜK PATENİ

MAX
1,60 m/s



5-9-10-16 mm
L TYPE GUIDE SHOES (LK)
SABİT PATEN (LK)

MAX
1,20 m/s



5-9-10-16 mm
GUIDE SHOE FOR HYDRAULIC LIFT
HİDROLİK ASANSÖR PATENİ

MAX
1,20 m/s



9-10-16 mm
ROLLER SLIDING GUIDE SHOES
TEK MAKARALI HİDROLİK ASANSÖR PATENİ

MAX
1,20 m/s



5-9-10-16 mm
GUIDE SHOES WITH IRON BASE
DÖKÜM GÖVDELİ PATEN

MAX
2,50 m/s



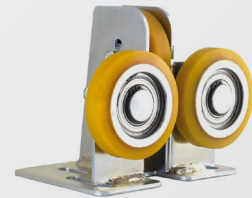
5-9-10-16 mm
SPRING LOADED ROLLER GUIDE SHOES
YAYLI MAKARALI DÖKÜM GÖVDELİ PATEN

MAX
1,60 m/s

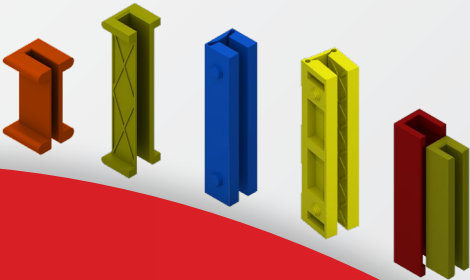


5-9-10-16 mm
SPRING LOADED ROLLER GUIDE SHOES
MAKARALI DÖKÜM GÖVDELİ PATEN

MAX
1,60 m/s



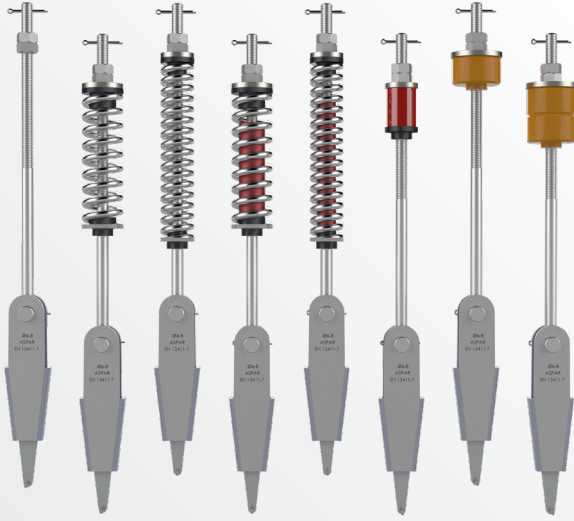
5-9-10-16 mm
ROLLER GUIDE SHOES
MAKARALI SAC GÖVDELİ PATEN



INSERT TYPES AND ROLLER IN VARIOUS SIZES
MUHTELİF ÖLÇÜLERDE PATEN PLASTİK VE TEKER ÇEŞİTLERİ



SYMMETRIC WEDGE (SHEET IRON) ROPE ATTACHMENTS
SAC GÖVDELİ HALAT ŞİŞELERİ

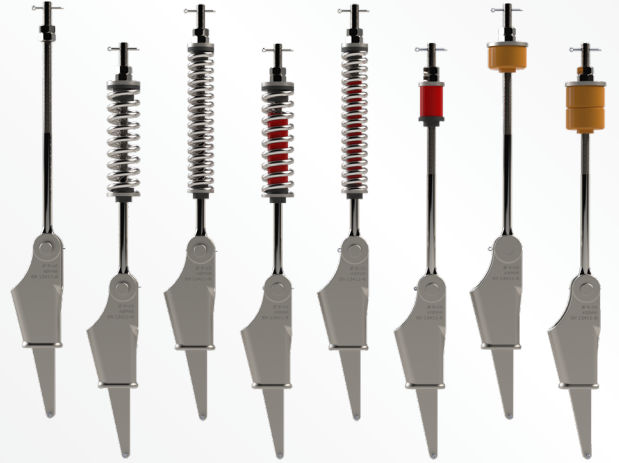


ROPE DIAMETER HALAT ÇAPI Ø mm	BREAKING FORCE KOPMA YÜKÜ kN
5 - 6,5	32
6 - 8	43,9
9 - 11	74
12 - 14	105
15 - 17	154,2



ASYMMETRIC WEDGE (DUCTILE IRON) ROPE ATTACHMENTS
DÖKÜM GÖVDELİ HALAT ŞİŞELERİ

ROPE DIAMETER HALAT ÇAPI Ø mm	BREAKING FORCE KOPMA YÜKÜ kN
6 - 8	43,7
9 - 10	72
12	109
13 - 15	148



COMPENSATION CHAIN & INSTALLATION KITS
DENGE ZİNCİRİ VE MONTAJ KİTLERİ



MODEL NO MODEL	UNIT WEIGHT (kg/m) BİRİM AĞIRLIĞI
DZ112	1.12 ± 0.20
DZ150	1.50 ± 0.21
DZ188	1.88 ± 0.20
DZ224	2.24 ± 0.20
DZ263	2.63 ± 0.20
DZ300	3.00 ± 0.20
DZ373	3.73 ± 0.21
DZ447	4.47 ± 0.20
DZ522	5,22 ± 0.20
DZ596	5,96 ± 0.20

MAX
3,50 m/s



COMPENSATION CHAIN ROLLER
DENGE ZİNCİRİ MAKARASI

MAX
1,75 m/s



COMPENSATION CHAIN ROLLER
DENGE ZİNCİRİ MAKARASI

MAX
1,60 m/s



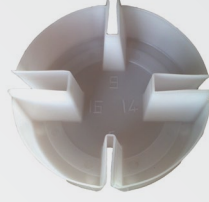
COMPENSATION CHAIN ROLLER
DENGE ZİNCİRİ MAKARASI

LUBRICATOR
YAĞDANLIK



ACCEPTABLE ALL GUIDE SHOES
TÜM PATENLERLE UYUMLUDUR

OIL COLLECTION CUP
YAĞ TOPLAMA KABI



RAIL: 5-9-14-16 mm
RAY: 5-9-14-16 mm

ROPE HOLDER
HALAT TUTUCULAR



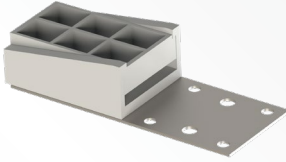
ROPE 6 X Ø10 mm
HALAT 6 X Ø10 mm

ROPE HOLDER
HALAT TUTUCULAR



ROPE 12 X Ø 6,0 - 6,5 mm
HALAT 12 X Ø 6,0 - 6,5 mm

FLEXIBLE CABLE HOLDER
FLEKSİBİL KABLO TAKOZU



MAXIMUM CABLE WIDTH (24x0,75 mm²) 72 mm
MAKSİMUM KABLO GENİŞLİĞİ (24x0,75 mm²) 72 mm

FLEXIBLE CABLE HOLDER
FLEKSİBİL KABLO TAKOZU



MAXIMUM CABLE WIDTH (32x0,75 mm²) 84 mm
MAKSİMUM KABLO GENİŞLİĞİ (32x0,75 mm²) 84 mm

SHEET IRON CABLE HOLDER
SAC FLEKSİBİL KABLO TAKOZU



MAXIMUM CABLE WIDTH (32x0,75 mm²) 84 mm
MAKSİMUM KABLO GENİŞLİĞİ (32x0,75 mm²) 84 mm

RAIL CLIPS
TIRNAKLAR



TYPE TİP	SCREW VİDA Metric Metrik	GUIDE RAIL RAY
11001	M10x30	T45-T50
11002	M12x35	T65-T70- T75-T82 0.185
11003	M12x40	T89-T90- T114- T125-T127
11004	M14x35	T89-T90- T114- T125-T127

LIFT LANDING DOOR RETIRING CAMS
LIRPOMPLAR



48-60-80-110-190 DCV
220 ACV/DCV



Headquarter | Merkez

1187. Sokak
No:8 Ostim/Ankara
T: 0312 354 17 31
F: 0312 354 64 80
aspar@aspar.com

Branch | Şube

Şerifali Mahallesi
Barbaros Cd. No:18
Yukarı Dudullu
Ümraniye/İstanbul
T: 0216 313 06 53
F: 0216 314 38 40
istanbul@aspar.com

Factory | Fabrika

Alcı OSB Mh.
ASO 2-3 OSB
2032 Cad. No:15
Temelli/Ankara
T: 0312 354 11 53

Aksöz Makina A.Ş. is a group company of Aspar Asansör A.Ş.
Aksöz Makina A.Ş. Aspar Asansör A.Ş. grup firmasıdır